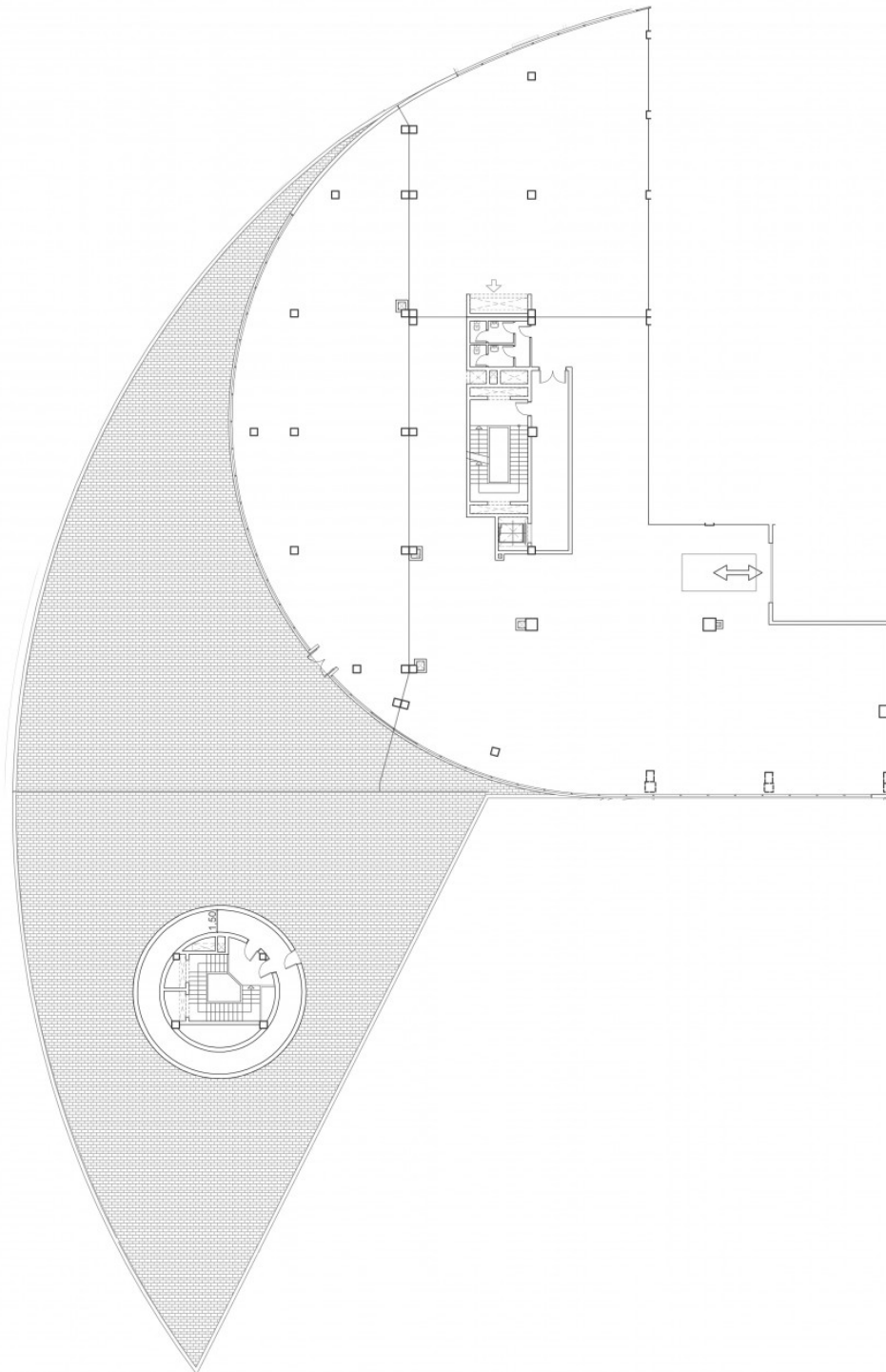


## Industrial Warehouse 6-3

Centro Costa Sur

Constructed surface: 1347.16 m<sup>2</sup>  
Exterior surface: 1.15 m<sup>2</sup>  
Total surface: 1348.31 m<sup>2</sup>

Santa Cruz

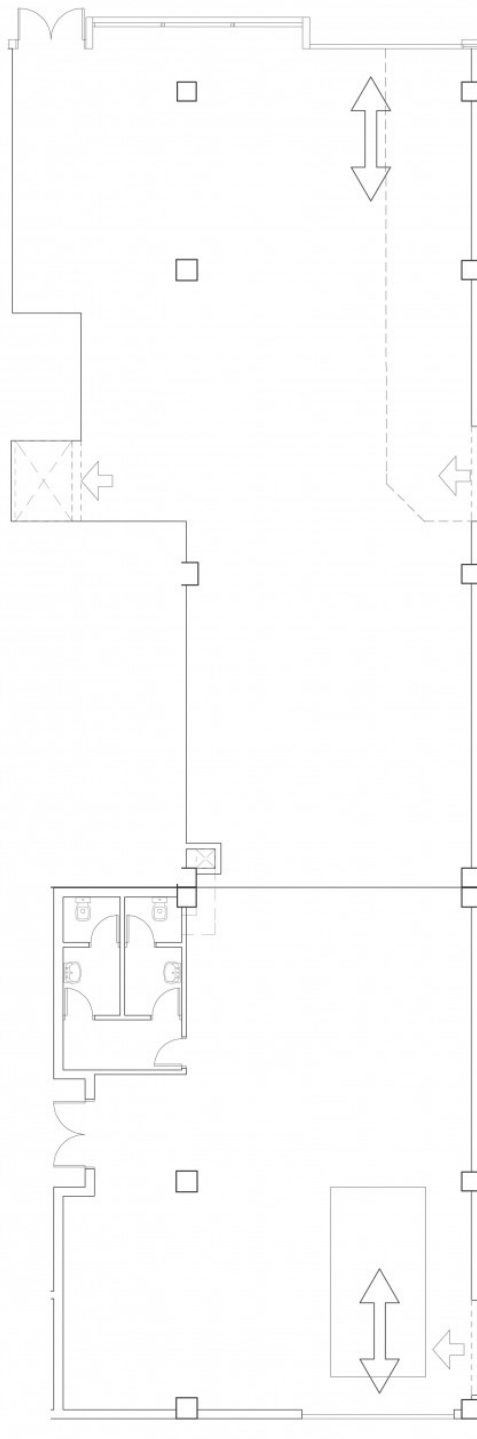


## Industrial Warehouse 8-3

Centro Costa Sur

Constructed surface: 389.49 m<sup>2</sup>  
Exterior surface: 0.00 m<sup>2</sup>  
Total surface: 389.49 m<sup>2</sup>

Santa Cruz

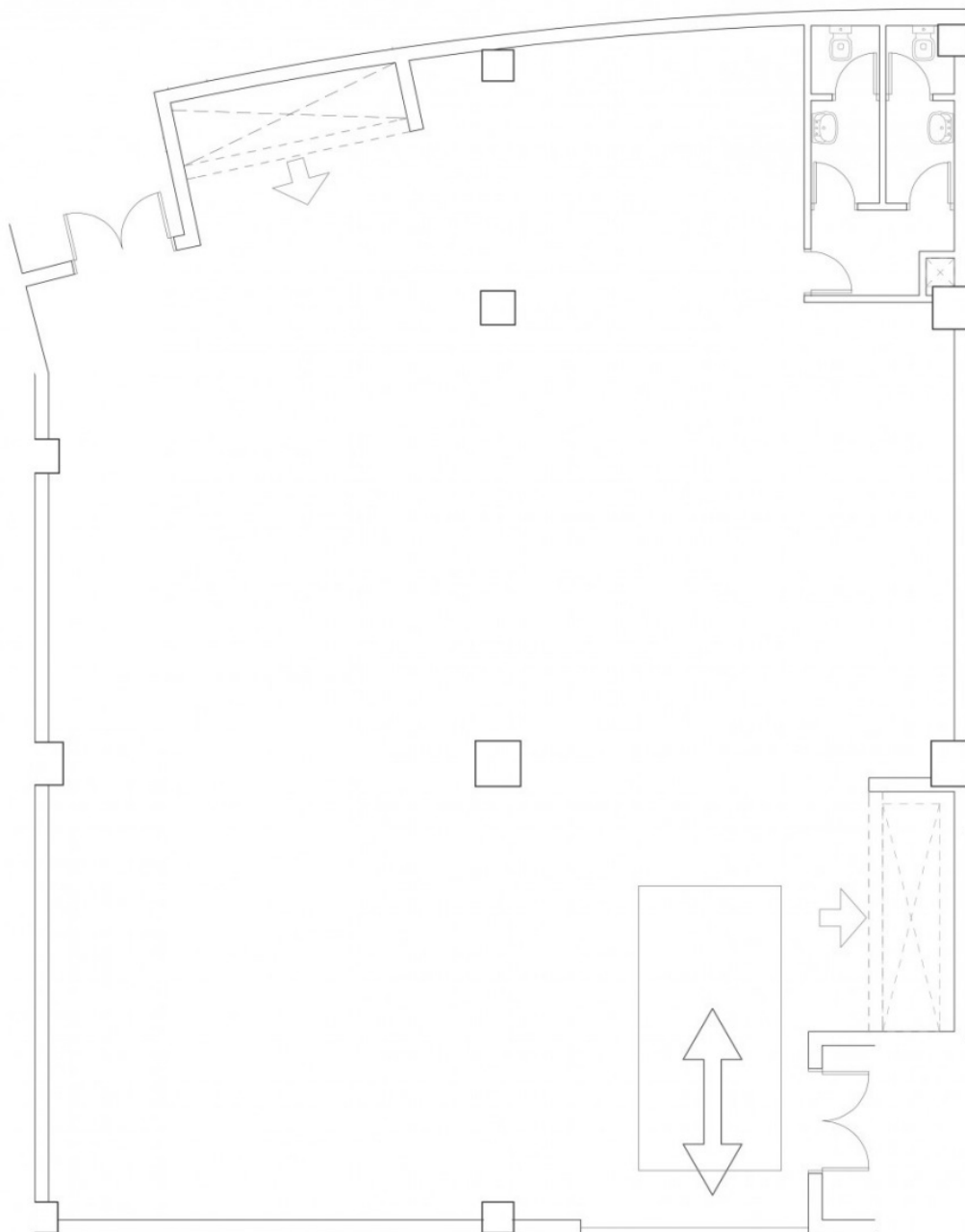


## Storage A6-1

Centro Costa Sur

Constructed surface: 331.19 m<sup>2</sup>  
Exterior surface: 0.00 m<sup>2</sup>  
Total surface: 331.19 m<sup>2</sup>

Santa Cruz



## Storage A8-2

Centro Costa Sur

Constructed surface: 678.14 m<sup>2</sup>  
Exterior surface: 0.00 m<sup>2</sup>  
Total surface: 678.14 m<sup>2</sup>

Santa Cruz

